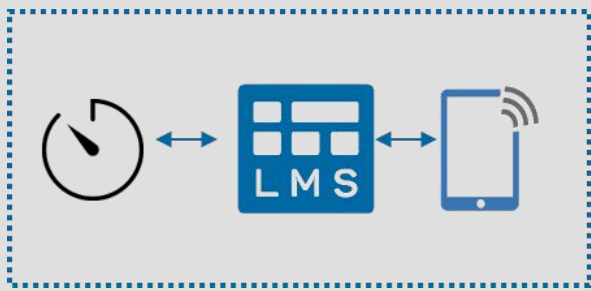




picture: ANDRITZ HYDRO



## New modules lead to clear savings

ANDRITZ HYDRO provides the electromechanical equipment and the pressure pipeline for the new pumped storage hydroelectric power station Gouvães in Ribeira da Pena, Portugal. For this project, Insite LMS is used as entire construction site solution.

In addition to the numerous, already proven Insite LMS modules, the modules **Time Tracking** and **Digital Construction Diary** were subjected for the first time to a practical test in this project.

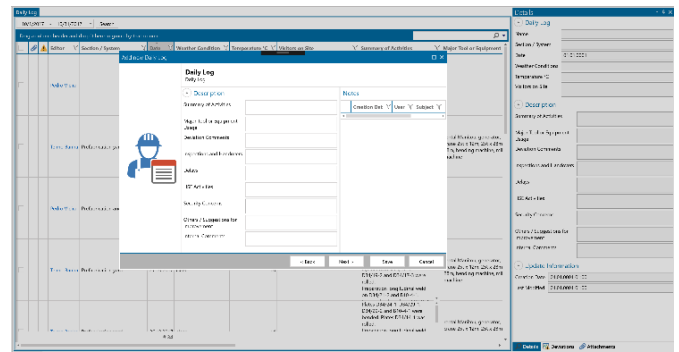
## Time Tracking improves quality

It's a first: Time Tracking and the Digital Construction Diary – both new modules of the Insite LMS software package – are used for the first time: ANDRITZ HYDRO is using them for the large-scale order of its pumped storage hydroelectric power station in Gouvães.

Time Tracking enables a complete digital time recording for employees and external suppliers on the construction site. Never before has an hour tracking been so detailed and even per employee possible. Gerhard Laher reports: "It used to be a considerable effort to record on lists the hours spent on the construction site. Thanks to the support of Insite LMS, this burdensome list-making is no longer necessary." Before Insite LMS, presence times had to be manually entered into lists by each employee. Now instead, this is done automatically via fingerprint.

## Digital construction diary used for the first time

With Daily-Log, as Insite LMS calls its Construction Diary, the project team receives a tool, which allows a better structure, and thus also a standardized reporting. The data within the Daily-Log are registered daily and can be exported in a predefined format in weekly or monthly reports. Very different templates and the continuous transmission via mail are now thing of the past.



### Solution

Insite LMS is used throughout the entire process: transport organization, site delivery, warehouse management, installation, Time Tracking, Daily-Log



### Facts & figures

- Construction time: 2018-2020
- Project volume: EUR 140 millions
- Four pump turbines with an output of 220 MW each

# Case Study – ANDRITZ Hydro – Time Tracking and Construction Diary

*„We have two goals: We want to improve time recording by means of Time Tracking and we want to improve the quality of our reporting by means of the Construction Diary, a new function of Insite LMS.“*

**Gerhard Laher**

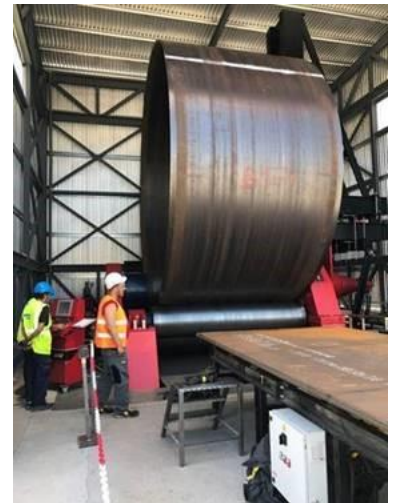
Manager Global Site Operations ANDRITZ HYDRO



*The fingerprint allows a clear assignment and attendance check of the employees on-site. It is used by about 170 people in two shifts daily.*



pictures: ANDRITZ HYDRO



## More than a logistics solution...

ANDRITZ HYDRO has been using Insite LMS for several years now as a construction site solution for logistics, material and defect management. For the Austrian hydropower expert, this time it was clear to rely again on the INSITE IT software. The order for the pumped storage power plant includes design, manufacturing, delivery, installation, supervision and commissioning of the pump turbines, motor generators, electrical and mechanical aggregates, as well as generator discharge and a pressure pipeline with a weight of approximately 12,000 tons, an average diameter of 5,400 mm, a length of about 2.5 km and three branches.

For INSITE IT, the special thing of this project is the first-time use of Time Tracking. With Time Tracking, the employees' presence times are documented electronically and to-the-minute. The second step allows the manager to book the presence times to their respective subprojects. "We set up a hardware infrastructure on-site and created a network in order to have time recording across the entire construction site. At each entrance, there is a fingerprint terminal. We use the software of the terminal provider, which transfers the data via an interface to Insite LMS.

Setting up the entire software and the system in general went very smoothly," says Laher. From that moment, the number of employees on-site could be viewed at the push of a button and in real time.

For the individual employee, it makes no difference whether he is checking in at the electronic time terminal with the fingerprint or with an ID card. The big advantages are less administration effort – ID cards can be lost – tamper-free presence control and the clear assignment of the fingerprint to the respective person. Insite LMS processes the person and presence data within the defined project structure and thus shows the actual personnel expenses per subproject.

### **The result:**

The introduction of electronic time tracking by means of fingerprints significantly facilitates time recording. The electronic data is reused for internal succession processes - like Payroll or HR. In addition, the new construction diary improves quality and allows a standardization of the construction site reporting.